

# Designplan luminaires available quicker than you think

The standard and EM3 emergency versions of many of our top selling fittings are now available in just 2 weeks\*.



## Basilica

[www.designplan.co.uk/products/basilica/](http://www.designplan.co.uk/products/basilica/)

350mm version only.



## Duomo

[www.designplan.co.uk/products/duomo/](http://www.designplan.co.uk/products/duomo/)



## Mission

[www.designplan.co.uk/products/mission/](http://www.designplan.co.uk/products/mission/)



## Mission Bulkhead

[www.designplan.co.uk/products/mission-bulkhead/](http://www.designplan.co.uk/products/mission-bulkhead/)



## Monitor

[www.designplan.co.uk/products/monitor/](http://www.designplan.co.uk/products/monitor/)

1240mm and 1540mm versions only.



## Pantheon

[www.designplan.co.uk/products/pantheon/](http://www.designplan.co.uk/products/pantheon/)



## Parkalux

[www.designplan.co.uk/products/parkalux/](http://www.designplan.co.uk/products/parkalux/)



## Parkalux Angled

[www.designplan.co.uk/products/parkalux-angled/](http://www.designplan.co.uk/products/parkalux-angled/)



## Quadrant

[www.designplan.co.uk/products/quadrant/](http://www.designplan.co.uk/products/quadrant/)

800 and 1100lm versions - 2 week lead time\*  
1400 and 1900lm versions - **48 hour lead time\***



## QuadEvo

[www.designplan.co.uk/products/quadevo/](http://www.designplan.co.uk/products/quadevo/)



## RDL G2

[www.designplan.co.uk/products/rdl-g2/](http://www.designplan.co.uk/products/rdl-g2/)



## Tuscan 88

[www.designplan.co.uk/products/tuscan-88-2/](http://www.designplan.co.uk/products/tuscan-88-2/)

1300mm and 1600mm versions only.



## Tuscan 88 Angled

[www.designplan.co.uk/products/tuscan-88-angled/](http://www.designplan.co.uk/products/tuscan-88-angled/)

1300mm and 1600mm versions only.



## Tuscan 89

[www.designplan.co.uk/products/tuscan-89/](http://www.designplan.co.uk/products/tuscan-89/)

1250mm and 1550mm versions only.



## Tuscan 89 Angled

[www.designplan.co.uk/products/tuscan-89-angled/](http://www.designplan.co.uk/products/tuscan-89-angled/)

1250mm and 1550mm versions only.



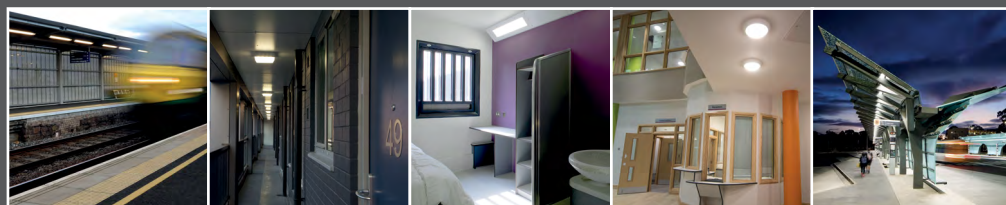
## Zelos Wall

[www.designplan.co.uk/products/zelos-wall/](http://www.designplan.co.uk/products/zelos-wall/)

Opal diffuser version only.

\*Maximum order quantities apply. For more information, call customer services on 020 8254 2020 or e-mail [sales@designplan.co.uk](mailto:sales@designplan.co.uk)

illuminating challenging environments



**designplan**  
LIGHTING

020 8254 2020  
[www.designplan.co.uk](http://www.designplan.co.uk)